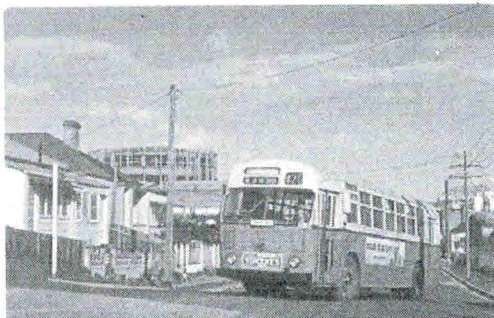




The Sydney Bus Museum is once again providing a vintage Sydney bus to connect a number of historic sites open to the public within the Sutherland Shire area as part of the Shire Heritage Festival. Our 1930s double decker bus will also be providing rides from the Sydney Tramway Museum on the second day of the festival.

SATURDAY, APRIL 20



One of our vintage Sydney single decker buses will be operating a service to connect a number of historic sites in the Sutherland Shire area as part of the Sutherland Shire Heritage Festival. Please note that this service only operates on Saturday, April 20.

MORE INFORMATION TO BE ANNOUNCED!

SUNDAY, APRIL 21

In addition to a vintage bus on display at the Sydney Tramway Museum, our oldest operational double decker Leyland TD4 1579 of 1937 will be operating trips from the Tram Museum to Sutherland and return.

THE BUS STOPS

Sutherland: Eton Street, outside the Performing Arts Centre
Loftus: Old Princes Highway, outside the Sydney Tramway Museum

TICKETS

See the conductor for your tickets on the bus, fares are a gold-coin donation by each passenger.

SERVICE TIMES

The vintage bus will run every hour, departing the Tram Museum on the hour. Service will operate from 10.00am until 4.00pm.



HOW TO GET TO THE TRAM MUSEUM

The Sydney Tramway Museum is located at 2 Pitt Street, Loftus.

BY CAR

The Tram Museum is approximately a 45 minute drive from Sydney, and parking is available along the Old Prince's Highway at Waratah Oval.

Please note that there is no parking available on the STM site on this day.

BY PUBLIC TRANSPORT

The Tram Museum is a two minute walk from Loftus Station, with trains from the City arriving approximately every 30 minutes.

Please check transportnsw.info for precise timetables and trackwork details.

BY VINTAGE BUS

Our vintage double decker will be stopping outside the Sutherland Performing Arts Centre on Eton Street, at 10 minutes past the hour from 10.10am until 4.10pm.

Our stop is a five minute walk from Sutherland Station, with trains arriving at Sutherland from the city approximately every 10 minutes.

Please note that SBM exhibits will not carry passengers from the SBM to the STM, and passengers can only ride the exhibits once they have arrived at the STM.

Photos courtesy of John Ward (City of Sydney Archives A-01112418) and David Wilson.
Header: John Ward, courtesy City of Sydney Archives A-01106263.

