



## *Sutherland Shire Historical Society Inc*

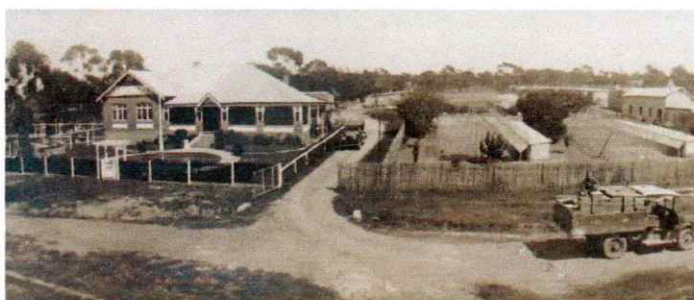
### **National Trust Heritage Festival NSW 2026**

**Saturday, 2nd May 2026** - Use the hop-on-hop-off Vintage Bus to visit Sutherland Shire Museum at 88 Venetia Street, Sylvania and discover changes in the Shire's history.

**Opening Hours: 10.00am to 3.00pm**

**FREE ENTRY**

#### **What has changed over time in the Sutherland Shire!**



*Hotham Mammoth Poultry Farm, Gymea, ca 1930s*  
[Source: Larry Humphrey]

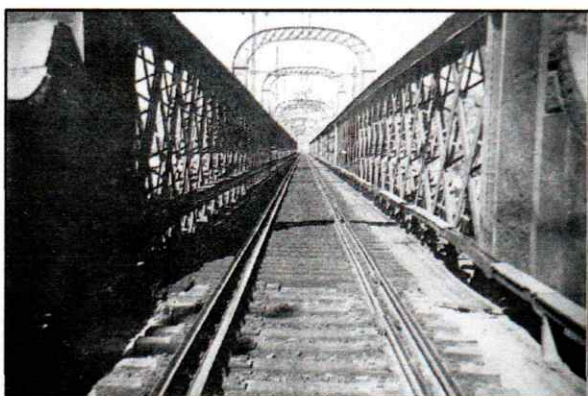


*Hotham House in 2023* [Photo: Kim Hatherly]

*Hotham House built in 1912, was the residence of a very successful poultry farm and has been a Gymea landmark for more than a century.*

*Now owned by Macquarie Health it is about to be demolished as part of the President Hospital redevelopment.*

*This beautiful house had local heritage listing, but despite years of campaigning by SSHS and local residents to save it, in 2024 the NSW Planning Commission gave the go ahead for demolition.*



*Como train bridge over the Georges River looking south, built in 1885* [Source: SSL]



*Como Bridge – now a walking bridge*  
[Photo, Pam Forbes, 2024]

Change is inevitable! Some is for the better, some not. It can be controversial. These are just a sample of changes over time to the Sutherland Shire you will find on display at Sutherland Shire Museum.

**Enquiries:** Graham or Carol – shirehistory@gmail.com